

Kindergarten Meet Up

July 28, 2021





Welcome

ABC's & 1-2-3's
of
Kindergarten





PIA VISION STATEMENT

PINE ISLAND ACADEMY
DISCOVERING STRENGTHS &
PURSUING DREAMS





PIA MISSION STATEMENT

ONE POD, MAKING WAVES –
FINS UP

Focusing on building an
Inspiring
Nurturing
SAFE Environment

Unlocking, Unlimited
POTENTIAL in EVERY student!



PIA SUPPORT TEAM



Amanda Riedl
Principal



Rachel Naylor
Assistant Principal



Wenona Arline
Assistant Principal



Corinne Fennelly
Guidance
Counselor (1, 3, 5,
7)



Heather Harrington
Guidance
Counselor (K, 2, 4,
6)



Kaneika Nimmons
Dean





PIA FRONT OFFICE TEAM

- Amy LeVasseur & Vickie Hall, Front Desk
- Kathleen Tompkins, Confidential Secretary/Bookkeeper
- Laura Parrish, Bookkeeper
- Christie Ball, Elementary Data Entry Operator
- Sandra Hood, Middle School Data Entry Operator
- Latifa Almabrouk, Extended Day Coordinator
- Jodie Hearn, Nurse





A is for...Assurance

Rest Assured that safety is our priority & the well-being of our Kindergarten students is the very most important thing to us!





A is for...Arrival

- Students will arrive each morning as a bus rider, car rider OR walker/biker/carter.
- **Student Drop off/Pick up –**
 - Student drop off/pick up is located in the loop closest to the front office.
 - Please follow the appropriate signs when dropping off.
- **Walk/Bikers/Carters**
 - Crossing Guards will be on duty from 7:40 – 8:00.
 - Students SHOULD NOT cross Pine Island WITHOUT the Crossing Guards direction. Students will cross Pine Island at 7:40
 - Crossing Guard will be on duty until 8:00AM.
 - All student must be dropped off through the front office if arriving AFTER 8:00AM.
 - All visitors that need to visit campus before school should use the visitor parking to access the front office.
 - **Visitors will not be permitted to use the walker/biker/carter entrance.**
- Bus Riders –
 - Bus Riders will unload at 7:40.





A is for...Attendance

- Ensure your child arrives at school on time daily beginning at 7:40 am. Instruction begins promptly at **8:00 am**.
- **Parents should provide the PIA Absentee form when a student has returned to school, via written or electronic.** This can be found on the PIA website





B is for...Birthdays

We love to celebrate student birthdays.

All treats must be pre-packed with
ingredient labels.

We highly encourage non-food items.



C is for...CAFÉ

- Café Leader- Ms. Tanya Cassano
- Teachers and staff are on hand to assist students in the café.
- Menus are available online.
- PayPams is the online system St. Johns County Schools use. You can deposit money and view purchased items on their website.
- Visit the Dolphin Café webpage under the Parent **Information tab on our website.**
- Kindergarteners can also bring a healthy snack to have in the afternoon hours.
- Each student has an ID used to purchase their café items.
- We will continue with our safe and healthy school protocol of NO visitors in the CAFÉ for the 21 – 22 school year.



Please consider...

- Items in lunchbox should be easy for students to open without support
- Begin practicing with students now if they will be bringing a lunch from home
- We will make sure every student has the support they need

Dear Parents

(of elementary school aged kids)

When your kids come to school we will have to help them open LOTS of the things you pack for lunch.

PLEASE HAVE THEM PRACTICE OPENING THINGS BY THEMSELVES.

These are EASIER to open. If I help them open it, I won't be putting my hands on parts that will go in their mouth.



These are HARDER to open. If you send these PLEASE have them PRACTICE opening it. If I help them open it, I will be putting my hands on parts that will go in their mouth.



If your kiddo can open everything in their lunch, it means less time waiting with their hand up, more time eating and less germs!! (even though we are washing our hands and disinfecting)

D is for...Dismissal

Dismissal Routines

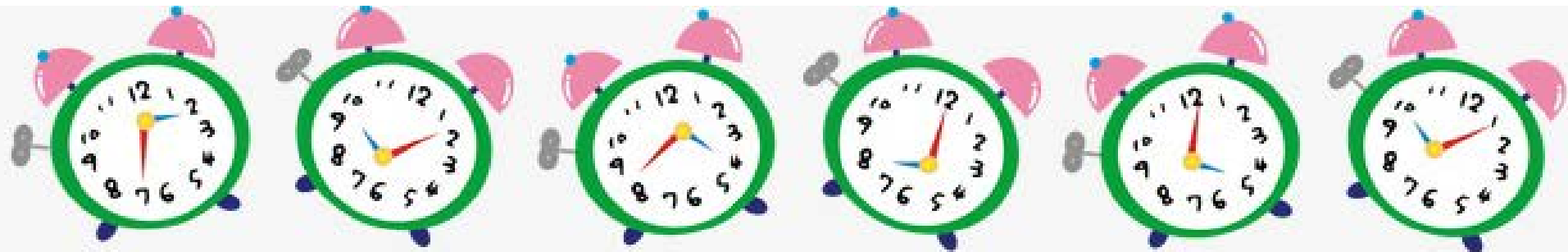
- Extended Day/Enrichment - Released First with the Extended Day Leader
- Bus Riders – released after Extended Day
- PPU/ DayCare Vans - Released after buses have been released
- Walkers/Carters/Bikers – released AFTER buses begin leaving property(**this is to avoid our walker/bikers/carter to get mixed in buses**)
- Reminder - all students have bus access or are assigned as walkers.
- Please be patient if choosing PPU as a dismissal option, however, we anticipate that PPU will become more efficient with time as the year progresses.



D is for...Dismissal

Critical Reminders - With increased traffic and safety updates, it is important that we work together to ensure the safety of our students.

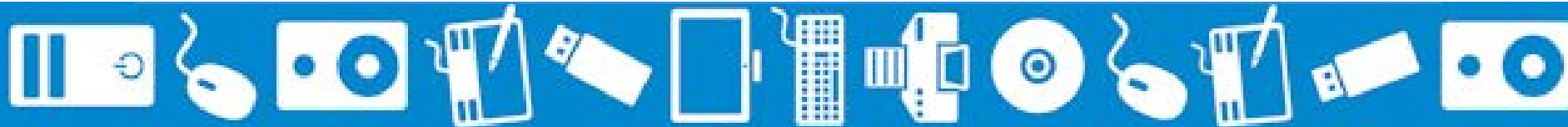
- We ask that parents/families **ALWAYS** remain in their vehicles during dismissal.
- Parents/Families **SHOULD NOT** be on sidewalks during dismissal; this impedes the safety of our students
- **Early Release Wednesday** – All students are dismissed at 1:20 on Wednesday.





E is for...Email & Communication

- Teacher's Email
- Teacher Newsletters
- Pine Island Academy Webpage
- Parent Handbook – located on PIA webpage under Parent Tab.
- Weekly/Monthly communication from the Admin Team
- Peachjar - located on PIA webpage - communication of community activities(beginning in fall)
- School messenger – Please make sure you have given approval to receive messages from school messenger. email, phone, text messaging system



E is for...Extended Day

AM DROP OFF

- If using Extended Day before school, students must be dropped off by 7:25am.
- Extended Day drop off and pick up is located at the CAFÉ entrance.
- Please park in designated areas and walk your student to the Extended Day doors located at the back of the stage area.

PM PICK UP

- Students may not be picked up BEFORE 3:15PM. This gives PIA plenty of time to get all students dismissed safely.
- Please see Mrs. Almabrouk's communication regarding pick up procedures.





G is for...*Guaranteed and viable curriculum & learning*

Common Instructional Language – PIA believes in
“Learning for ALL”

Where ALL students CAN and WILL learn!

Guaranteed and Viable Curriculum – Teachers develop common formative assessments that identify the level of rigor and instructional timelines for all students within a grade level and work collaboratively to ensure fidelity in high yield instructional strategies.

Universal Reteach(WIN Time – What I Need)– A universal re-teaching time where all learners are given additional time for re-teaching or enrichment. WE use a preventative model, not a “wait until they fail” model

Inquiry-based Learning - an inquiry-based learning environment where learners are given the ownership of their learning and teachers facilitate through guided questions, accountable talk, and strategies that teach students to be rigorous problem solvers.





H is for...Handbook

The PIA Handbook can be accessed on our homepage. Please make sure to review prior to the beginning of the school year.





I is for...Independence

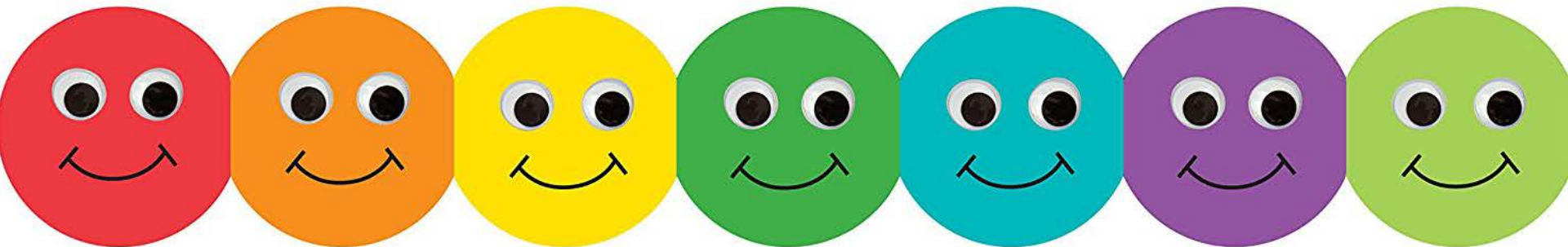
- Families will be able to walk students to class on their staggered start morning only.
- **On staggered start days ONLY** – please bring students at 8:15AM.
- Staff members will be available to walk students from bus/walker/carter/biker area and drop off areas to their classrooms.
- With our help and guidance our students will become **independent “schoolers.”**





J is for...Joy

Our kindergarten classes are filled with joy, laughter, kindness, & compassion.



K is for...Keep Updated

A great resource to stay updated is the
Pine Island Academy Website

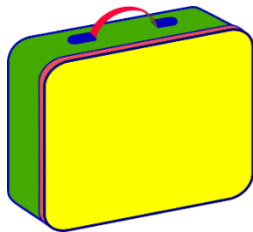
<https://www-pia.stjohns.k12.fl.us/>



L is for...Label

Please label all supplies on your Kindergarten Supply list with your child's first and last name.

In addition, please label jackets, water bottles and lunch boxes.



N is for...Nurse

- Pine Island Academy has a full-time nurse in the Clinic.
- Welcome Ms. Jodie Hearn as the PIA Nurse
- She is excellent at taking care of our kiddos.





O is for...Open House/ Curriculum Chat Night

In the Fall, Pine Island Academy will host a virtual Curriculum Chat Night (Open House).



P is for...PIA WAVE

(We are respectful, Always responsible and safe, Value each other and ourselves, EVERYONE Achieves!)

We believe that a positive school atmosphere will result in a more effective and meaningful learning environment for all students.

We are committed to providing opportunities for students to learn concepts, practice skills, display good citizenship and experience academic success.

We believe that highly effective schools are the result of the teamwork and commitment between school staff, students, and their families.

Our commitment to our students is to celebrate their accomplishments and success when they show **The PIA WAVE** – We are respectful, Always responsible and safe, Values each other and ourselves, where **EVERONE ACHIEVES!**



Learning and Behavior
Expectations

Catch the **WAVE** of Success!

PIA WAVE

Pine Island Academy

We are respectful

- Use your manners
- Use Level 2 voice
- Listen to your CAFÉ Leaders



Always responsible and safe

- Ask for help if needed, by raising hand
- Remain seated
- Be in control of your actions

Value each other and ourselves

- Make room for others
- Use your CAFÉ manners
- Use kind words when talking with friends

Everyone achieves/succeeds

- Clean up after yourself
- Pack up all your belongings before leaving the CAFÉ

Catch the **WAVE** of Success

CAFÉ



P is for...PTO

- Cole Naldzin and Kay Crouch– PTO Presidents
- Our wonderful PTO- continues to support both the educational needs of students and Staffulty and facility enhancements when needed.
- Visit the PIA PTO webpage link on our homepage.
- Please consider getting involved.
- Updates for PTO can be found on the webpage.
- Make sure you visit frequently to stay updated on current events.
- I hope you choose to get involved; we need you!





Q is for...Quick Good-Byes

Quick good-byes leave dry eyes!



R is for...Resource Classes

Kindergartners will rotate resource classes each day with their class.

Music – Ms. Glass

Art – Ms. Simpson

PE - Coach Anderson

STEM – Ms. Simmers

Media Center – Ms. Masitti and Ms. Gerry

Guidance – Ms. Harrington



S is for...Staggered Start

- Pine Island Academy uses a staggered start for kindergarten students.
- This year, on your student's staggered start day, we will ask you arrive at 8:15am and park in the parent parking lot.
- Parents may walk students to their classrooms on their staggered start morning and Friday, August 20 ONLY!





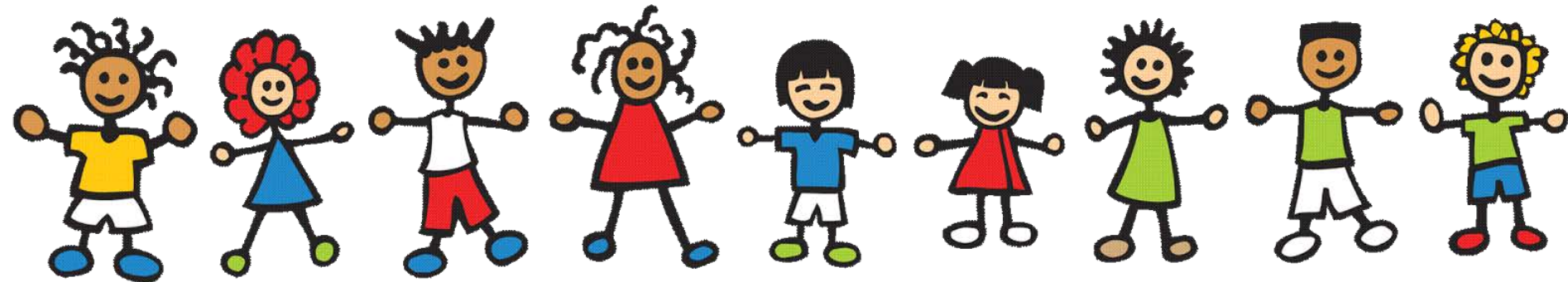
T is for...Transportation (Bus Riders)

- Teachers and staff will assist students to their designated location during arrival and dismissal time.
- Bus information will come the week of August 2.
- Please make sure your student rides the bus to and from school the first day they ride the bus. You are more than welcome to follow the bus to the school to ensure your student arrives safe.
- Please remember to park and watch from the parking lot this year.



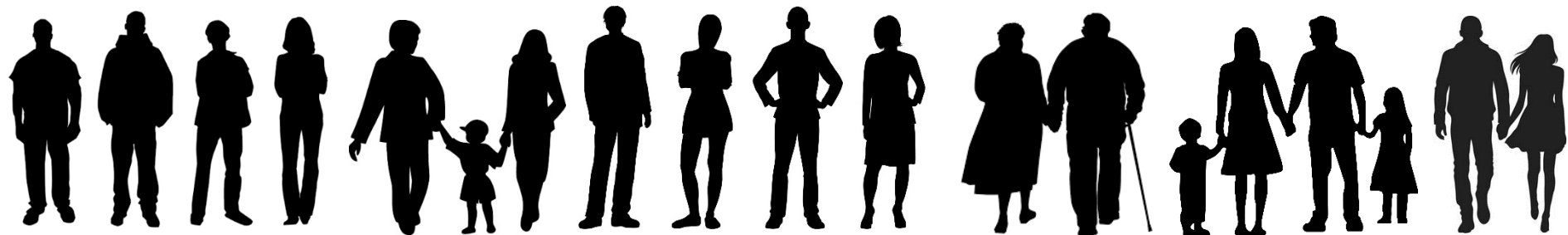
U is for...Unique

- Kindergarten students learn they are special and unique.
- Kindergartners have opportunities to describe how they are alike, as well as how they are different from others.
- This is how we learn to be writers!



V is for...Visitors

- As required by Florida state law, everyone MUST have School Access approval to go beyond the front office at Pine Island Academy .
- Currently, only essential visitor and volunteers can access campus by appointment only.
- Visitors and volunteers are subject to COVID screening/clearance before entry.
- **Please DO NOT come to campus if you are sick!**



W is for...early release Wednesdays

- St. Johns County Schools have early-release Wednesday.
- Pine Island Academy will dismiss at 1:20 PM every Wednesday.

WEDNESDAY

X is for...eXtra Clothes

Please make sure to have a pair of extra clothing, including under garments, in your child's backpack should those be needed.



Y is for...You!

- *You are a vital part of your child's education*
- **Parent Leadership Expectations:**
 - Play an active role in your child's education by communicating with teachers or staff members.
 - ***Check your child's folder daily for important information.***
 - Talk to your child about their school day.
 - Support THE PIA WAVE expectations and celebrate students for good character and always doing their best.
 - Treat all citizens with respect. (Students, Staffuly and other parents).
 - Have **HIGH EXPECTATIONS** for your child both behaviorally and academically.





Z is for...ZZZ's

Please make sure your child is well-rested.





General Information

Q & A

Campus Tours

- We'll see you at Kindergarten "Meet and Greet" on August 13.
- Please look for an email on August 6 to sign up for session 1 or session 2.

Kindergarten! ... here I come!

