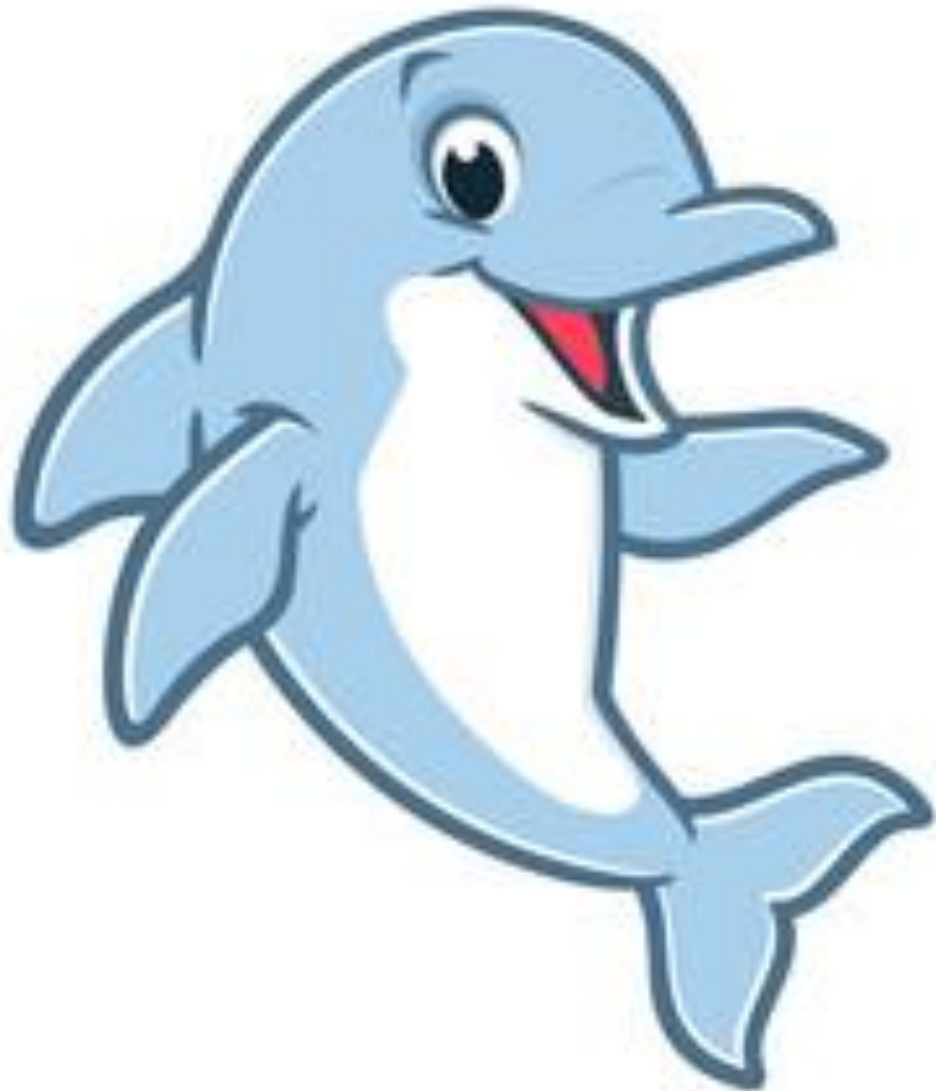




WELCOME
TO
CURRICULUM NIGHT

Kindergarten

2022-2023



Pine Island Mission Statement

Focusing on building an

Inspiring

Nurturing

Safe environment

Unlocking, unlimited

Potential



WHAT PIA IS ALL ABOUT...



Pine Island Academy

We are respectful

- Follow adult directions
- Use appropriate voice level

Always responsible and safe

- Take care of school spaces
- Be in control of your actions

Value each other and ourselves

- Show kindness

Everyone achieves

- Find an adult if you need help

*Catch the **WAVE** of Success*



PROCEDURES


Attendance: It is important that your child be in class every day. School begins at 8:00 AM and dismisses at 2:20 PM. Wednesday dismissal is one hour earlier.

Tardiness: A child is considered tardy after 8:01 AM. If for some reason you are tardy, please escort your child into the office to obtain a tardy slip.

Absence: Please submit absences via the PIA Digital Absentee form found on the PIA website or send a note in your child's folder when returning to school following an illness. The office needs the excuse in writing for their records. Make up work will be given upon return.

Medication: A form is required and may be obtained from the school website

Dress Code: Please refer to the Student Code of Conduct.



Excused Absences: When your child is absent from school, please remember that our registrar must be notified via handwritten note or in email. **Excuse notes can ONLY be accepted within 48 hours of a student returning to school,** however, this does not necessarily mean the absence will be excused. Family vacations, birthday parties, shopping trips, suspension from school, and other avoidable absences are unexcused.

Electronic Devices and Acceptable Use: Electronic devices, including cell phones, smart phones, and smart watches should be OFF and AWAY during school hours, unless otherwise directed by an adult. Please refer to the district's [Acceptable Use Policy](#) or the Student Code of Conduct for more information.

Birthdays: Only Store-bought treats are allowed to be sent into the classroom. Parents are asked to drop them off at the front office. Parents will not be allowed to bring treats to the classroom.

Transportation Changes: All transportation changes need to be submitted via transportation link (PIA website) PRIOR to the deadline.

Enrichments: Please be sure to let your child's teacher know if they will be attending any after school enrichment!

VOLUNTEERS



Families will have various opportunities to volunteer in the classroom.

Only APPROVED volunteers with proper ID are allowed access through the front office and into the building.

Please complete a volunteer application which can be obtained through our PIA website.

COMMUNICATION



You can best contact your teacher by email.

You may also send in notes via the daily communication folder.

IT IS IMORTANT TO NOTE THAT ST. JOHNS COUNTY SCHOOL DISTRICT TEACHERS HAVE UP TO 48 SCHOOL HOURS TO RESPOND TO AN EMAIL. PLEASE DO NOT SUBMIT TIME SENSITIVE CONCERNS, SUCH AS TRANSPORTATION CHANGES VIA EMAIL.

CURRICULUM



DAILY SCHEDULE

90-minute Literacy Block

30-minute Lunch

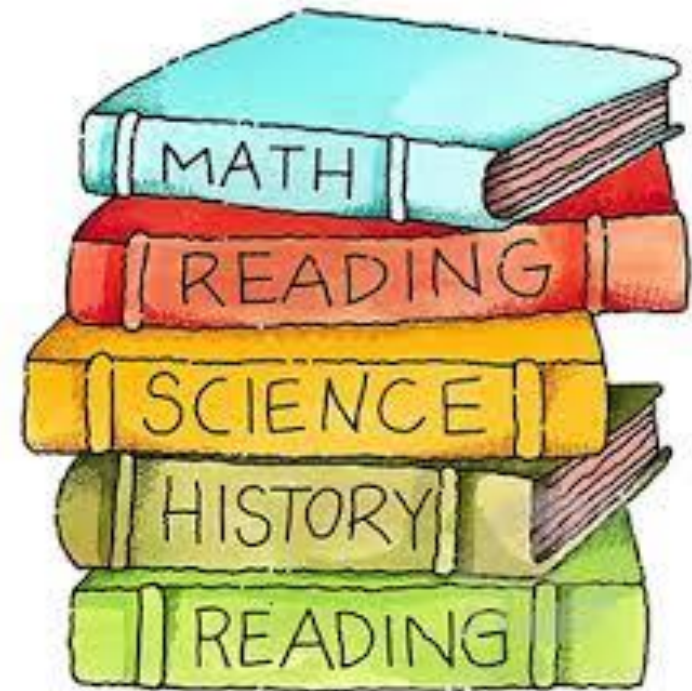
60-minute Math Block

20-minute Recess

40-minute Resource Class

20-minute Science/Social Studies Block

30-minute Teacher Led PE



LITERACY BLOCK

Language Arts instruction is comprised of:

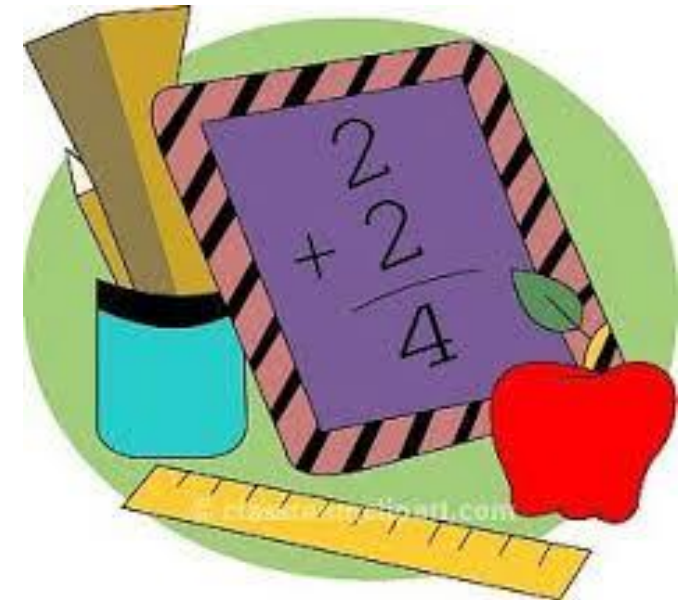
- Reading Foundations (Phonemic Awareness, Phonics)
- Literature
- Informational Text
- Writing
- Language (Conventions, Vocabulary)



MATHEMATICS

Math instruction is comprised of:

- Calendar (Months, Days, Place Value)
- Number Talks
- Standards cover
 - Numbers & Operations
 - Algebra & Algebraic Expressions
 - Geometry
 - Measurement



SCIENCE

- The Practice of Science: Using the 5 S
- Properties of Matter & Changes in Matter
- Energy
- Earth & Space
- Living Organisms



[K Science Public YAG 2022-23.pdf](#)



Social Studies

- Citizenship
- American History
- Geography
- Economics

[2022-23 Public Year at a Glance-Social Studies-Kindergarten.pdf](#)

TESTING INFORMATION

School Assessments

- Common Formative and Summative assessments
- Informal Observations
- Teacher Conferences

District Assessments

- FAST Early Literacy and Math
- Assessments are administered in the fall, winter, & spring

PROFESSIONAL LEARNING COMMUNITIES (PLC)



Teachers meet weekly to share expertise and work collaboratively to improve teaching skills and the academic performance of all kindergarten students.

WIN TIME (WHAT I NEED)

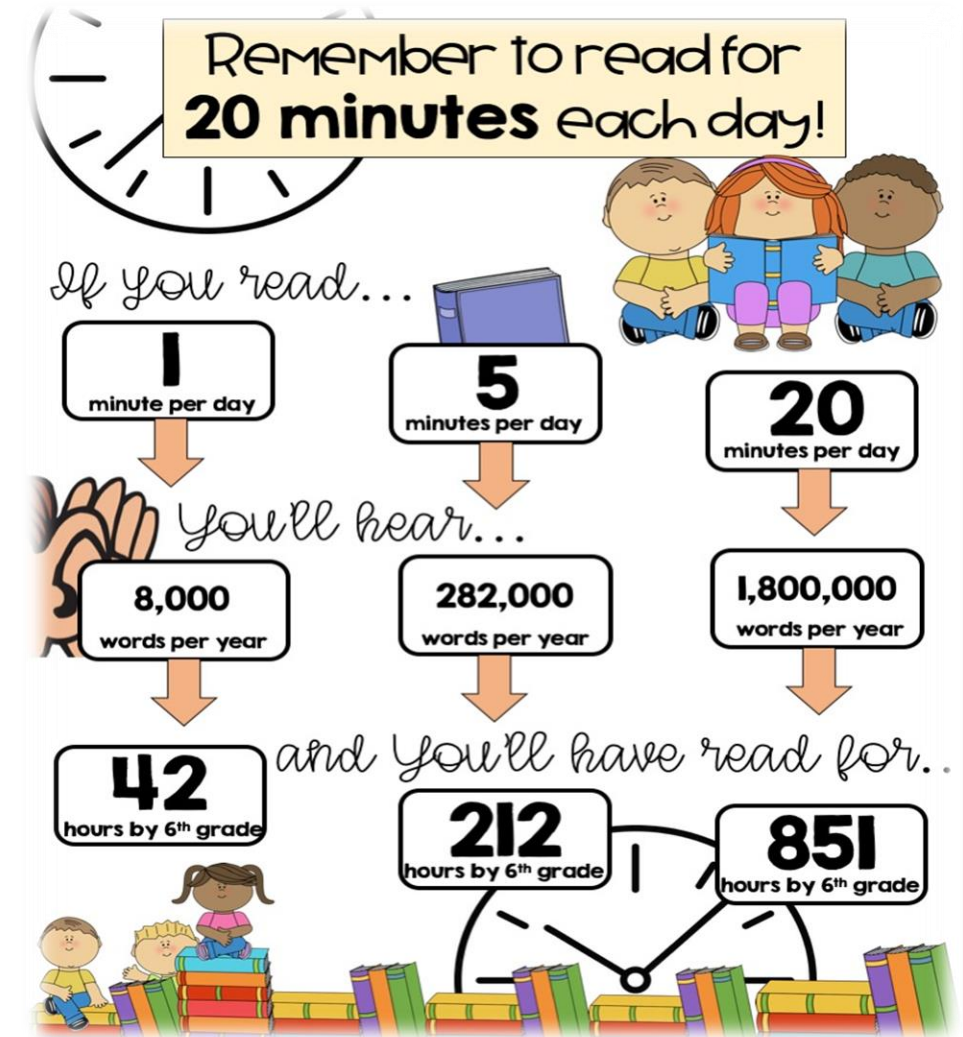
WHAT IS IT?

- The first 30 minutes of the day; 8:05–8:35.
- A time provided for enrichment or remediation in reading.
- Students will switch and go to a new classroom for this time.

Please make sure your child arrives on time!!!

HOMEWORK

- Letter names and sounds
- Writing letters and numbers
- Practice Sight Words
- Read to and/or with your child for 20 minutes
- Counting by 1's and 10's to 100
- Self advocacy
- Problem Solving skills



PARENT CONFERENCES

Conferences will be held the first two weeks of October.
Conferences will be held in person or via zoom. A Sign-up
Genius will be emailed to families September 30th.

We look forward to meeting with you to discuss your
child's progress and growth! Together IS BETTER!!! 😊

Have you joined the Pine Island PTO yet? Please head to our PIA Website and click the PTO link to find out all you can do help support our Dolphins.

Thank you so much for supporting our school!





THANK YOU!

It is a pleasure to partner with you in this year's educational journey.