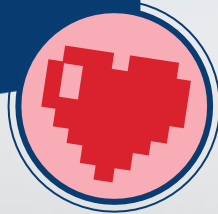


6th grade English Language Arts

Ms. Murphy, Ms. Petty,
& Mrs. Ray-Luz



BOFFIN



FUNKY TUNES



Course Description

Provide 6th grade students, using texts of appropriate complexity, integrated language arts study in reading, writing, speaking, listening, and language for college and career preparation and readiness.



Units of Study for the Year

Quarter 1: Literary and Informational Standards

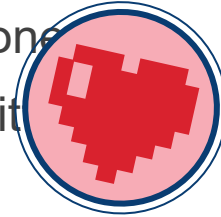
- Focus on fictional text that are written in a narrative form.
- Analyze how character interact with each other and contribute to the plot.
- Recognize the universal themes within a text.
- Explain how text features and sections convey meaning to text
- Analyze implied and explicit central idea as it's conveyed throughout the text
- Write an argumentative informational paragraph.
- Write an expository essay



Units of Study for the Year

Quarter 2: Poetry/Poetic Devices

- Describe the impact of different poetic forms; mainly sonnets and villanelles
- How figurative language contributes to mood and tone
- Compare and contrast different types of writings with different time periods
- Write an expository 5 paragraph essay



Quarter 3: Literary & Informational Text

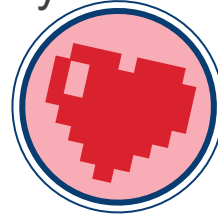
- Analyze how an author writes in different points of view
- Analyze authors purpose of multiple authors regarding the same topic or event
- Develop types of fallacies and rhetorical appeals within an argumentative text
- Write a 5 paragraph argumentative essay using different types of fallacies and rhetoric appeal



Units of Study for the Year

Quarter 4: Spiral Review/Research/Creative Writing

- Create oral presentations using research skills
- Spiral review all standards discussed throughout the year
- Focus on MLA citing



How will we address each standard?



- We will use varied texts to discuss the different themes and develop logical inferences including, but not limited to, novel read alouds, independent novels, smaller reading passages
- We will analyze literature and informational texts from varied literary periods. Our analysis will consist of the following:
 - Text craft and structure
 - Elements of literature
 - Arguments and claims supported by textual evidence
 - Power and impact of language
 - Influence of history, culture, and setting on language
 - Personal critical and aesthetic response
- We will write for varied purposes. The different types of writing we will do are:
 - Argumentative/persuasive claims
 - Informative/expository
 - Response to literature and informational text using text evidence
 - Narratives



Success for ELA

How are you successful for ELA class?

In Class

- Participation is key. We have a lot of class discussions in class. If a student is participating in that discussion appropriately, comprehension of the text will improve.
- Collaborating with their peers
- Always be prepared
- Check Schoology daily



At Home

- Reading at least 20 minutes a day
- Prompt your student to elaborate their opinions and challenge them to consider an opposing opinion
- Encourage personal forms of writing
- **If absent, use the Daily At Home Agenda to complete missing work. It is the responsibility of your student to check Schoology and absent bin for missing work.**



Grading Policy



Summative Tests – 70%

Formative Quizzes/Projects/Classwork - 30%

Grade Recovery:

Students scoring below a 75% will be required to participate in grade recovery. This will include remediation and a retest.

Students will get the highest grade scored. Students are given a Grade Recovery contract. This must be signed and all remediation completed before retest is given.



PBIS

- Middle School is using an online system called PBIS Rewards.
- Students earn points daily in every class as well as in other areas of the school for positive behaviors
- We will be doing a quarterly celebration each quarter and grade level competitions to build the school culture throughout the year.
- Any questions you can email Cali.Harlow@stjohns.k12.fl.us