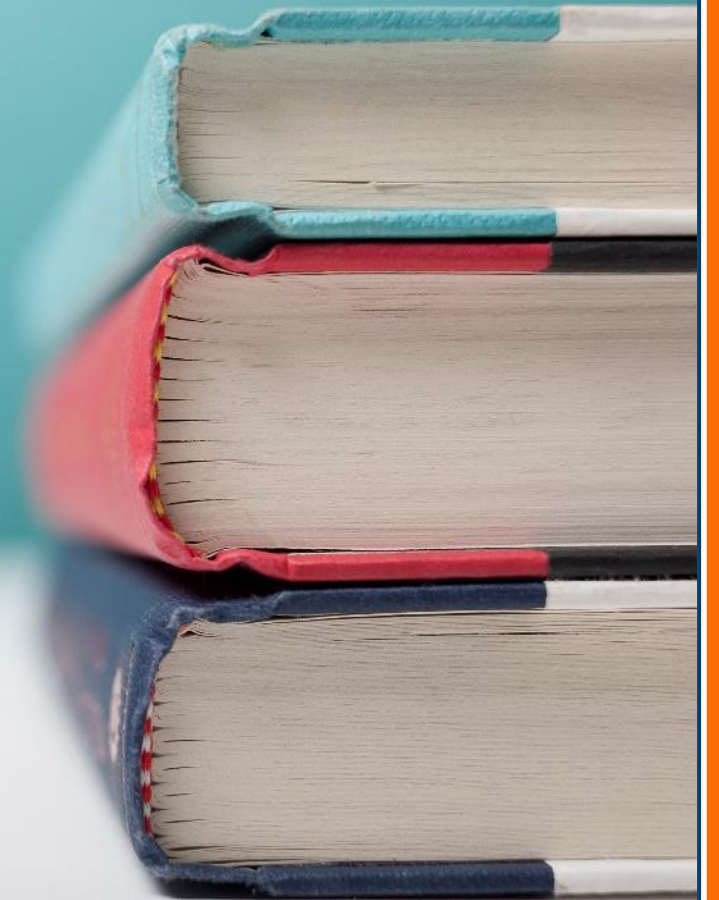
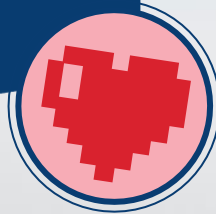


8th grade English Language Arts

Mrs. Cally, Ms. Harding, & Ms.
Waidmann



BOFFIN



FUNKY TUNES



Course Description

Provide 8th grade students, using texts of appropriate complexity, integrated language arts study in reading, writing, speaking, listening, and language for college and career preparation and readiness.



Units of Study for the Year

Quarter 1: Narratives and Expository Writing

- Analyze how character interact with each other and contribute to the plot.
- Recognize the two or more universal themes within a text and their develop throughout the story line
- Analyze how authors develop and individualize the different perspectives of characters
- Compare and contrast the different uses of archetypes
- Writing to respond to different types of texts

Quarter 2: Poetry/Poetic Devices and Expository Writing

- Analyze structure, sound, imagery, and figurative language in poetry
- How figurative language contributes to symbolism
- Paraphrase from content level reading passages
- Write an expository essay



Units of Study for the Year

Quarter 3: Informational Text and Argumentative Writing

- Explain how text features and sections convey a purpose and meaning to text
- Analyze two or more implied and explicit central idea as they're conveyed throughout the text
- How does an author use rhetoric appeal to support his/her idea throughout a text
- Write an argumentative essay with at least one claim and one counterclaim for rebuttal

Quarter 4: Spiral Review/Research/Creative Writing

- Create oral presentations using research skills
- Spiral review all standards discussed throughout the year
- Focus on MLA citing



How will we address each standard?



- We will use varied texts to discuss the different themes and develop logical inferences including, but not limited to, novel read alouds, independent novels, smaller reading passages
- We will analyze literature and informational texts from varied literary periods. Our analysis will consist of the following:
 - Text craft and structure
 - Elements of literature
 - Arguments and claims supported by textual evidence
 - Power and impact of language
 - Influence of history, culture, and setting on language
 - Personal critical and aesthetic response
- We will write for varied purposes. The different types of writing we will do are:
 - Argumentative/persuasive claims
 - Informative/expository
 - Response to literature and informational text using text evidence
 - Narratives

Success for ELA

How are you successful for ELA class?

In Class

- Participation is key. We have a lot of class discussions in class. If a student is participating in that discussion appropriately, comprehension of the text will improve.
- Collaborating with their peers
- Always be prepared
- Check Schoology daily



At Home

- Reading at least 45 minutes a day
- Completing weekly reading log comprehension questions and any homework assignments on the digital textbook.
- Prompt your student to elaborate their opinions and challenge them to consider an opposing opinion
- Encourage personal forms of writing
- **If absent, use the Daily At Home Agenda to complete missing work. It is the responsibility of your student to check Schoology and absent bin for missing work.**



Grading Policy



Summative Tests – 70%

Formative Quizzes/Projects/Classwork - 30%

Grade Recovery:

Students scoring below a 75% will be required to participate in grade recovery. This will include remediation and a retest. Students will get the highest grade scored up to 85.

Students are given a Grade Recovery contract. This must be signed and all remediation completed before retest is given.



PBIS

- Middle School is using an online system called PBIS Rewards.
- Students earn points daily in every class as well as in other areas of the school for positive behaviors
- We will be doing a quarterly celebration each quarter and grade level competitions to build the school culture throughout the year.
- Any questions you can email Cali.Harlow@stjohns.k12.fl.us