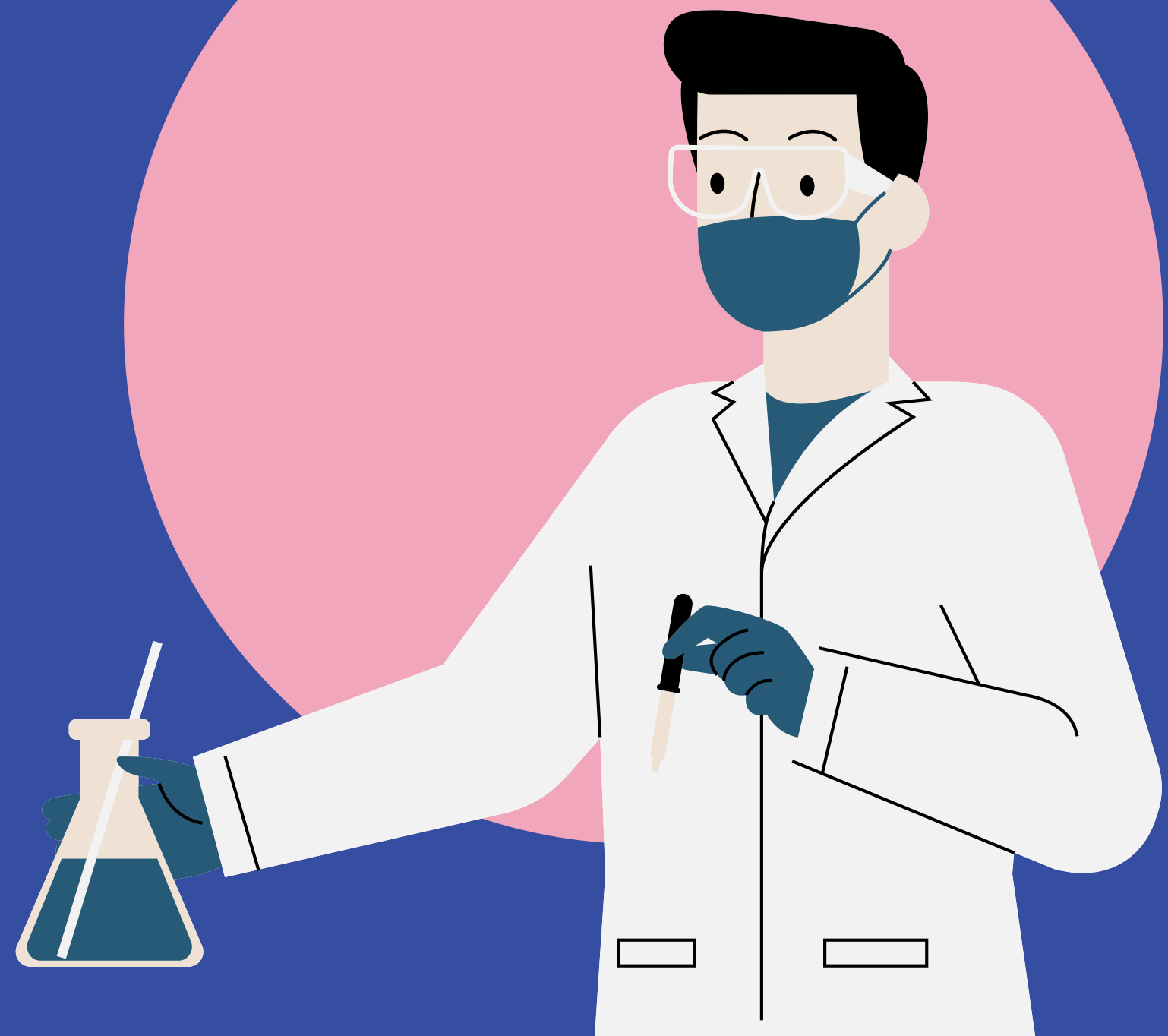


6TH AND 7TH ADVANCED SCIENCE

With Mr. Hines



CONTACT



EMAIL

christopher.hines@stjohns.k12.fl.us



SCHOOLOGY

Students can
message me on
Schoolology

*Contact will be returned during school hours

UNITS OF STUDY

6TH GRADE ADVANCED

QUARTER 1

The Nature and
Practice of Science

Energy Transfer and
Transformations

Forces

QUARTER 2

Earth's Systems

Weather

QUARTER 3

Weathering, Erosion,
Deposition and Landforms

Intro to Cells

Parts of Cells

QUARTER 4

Classification

Human Body Systems and
Levels of Organization

Infectious Agents



UNITS OF STUDY

7TH GRADE ADVANCED

QUARTER 1

The Nature and
Practice of Science

Forms of Energy

Waves

QUARTER 2

Heat and Thermal Energy

Earth's Structures

Age of the Earth

QUARTER 3

Plate Tectonics

Cell Division

Genetics

QUARTER 4

Ecosystems

Evolution and Natural
Selection

Human Impact on Earth



SCHOOLGY

Schoology is where Weekly Calendars, Lessons, PowerPoints, Notes, and Assignments will be posted, when possible, in weekly folders.

Schoology will be updated over the weekend. The daily assignments will be posted each day.

As much time as possible will be given for students to complete work in class.

HAC

Home Access Center or HAC will house grades.

Codes You May See:

- INC = Incomplete
- EXT = Excused Assignment
- INO = Zero

GRADING

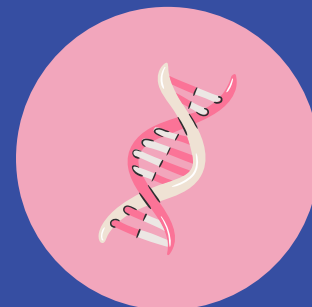
SUMMATIVE

Summative assessments make up 70% of the students' grade. This can consist of Unit Tests, Projects, or other assignments determined to assess their knowledge at the END of the unit.



FORMATIVE

Formative assessments make up 30% of the students' grade. This can consist of quizzes, classwork, homework, labs, or other assignments determined to assess their knowledge DURING the unit.



SCALE

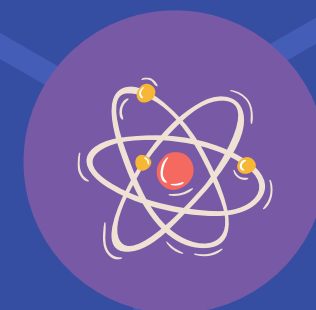
90% - 100% = A

80% - 89% = B

70% - 79% = C

60% - 69% = D

1% - 59% = F



RETEST OPPORTUNITIES

FORMATIVES

Students will make test corrections to help them understand why they missed the question(s). Students cannot retake formative assessments but a summative assessment score can replace the formative assessment score.

SUMMATIVES

Students who score under 85% on a summative assessment will have the opportunity to retest. Students who score below 75% MUST meet with the teacher to go over the standards and material again before retesting, various remediation strategies can be utilized. This happens outside of normal class time and must be scheduled.





ABSENCES

For normal absences, students can pick up paper copies when they return or access the materials through Schoology, if available. For planned absences, students can reach out to the teacher. I usually have plans week in advance but will need a few days to get all of the materials printed and/or sent.

Please have the student reach out. We want to help our students learn independence and responsibility for their education.

MATERIALS



Every Day Students Need:

- Pencils
- 3 Ring Binder
- Composition Notebook
- Colored Pencils
- Highlighters

*Some items can be kept in my classroom

PBIS

POSITIVE BEHAVIOR INTERVENTIONS AND SUPPORT



Middle School is using an online system called PBIS Rewards.



Students earn points daily in every class as well as in other areas of the school for positive behaviors



We will be doing a quarterly celebration each quarter and grade level competitions to build the school culture throughout the year.



Any questions you can email
Cali.Harlow@stjohns.k12.fl.us



THANK YOU!

Amazon Wish List

