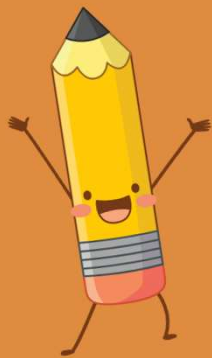


Pine Island Academy

World History

# Curriculum Chat

August 28, 2025



# Welcome Parents!

- History Progression in Middle School
- Curriculum
- District Testing
- Schoology
- School Grading Policies
- Re-Testing Policy



# History Progression

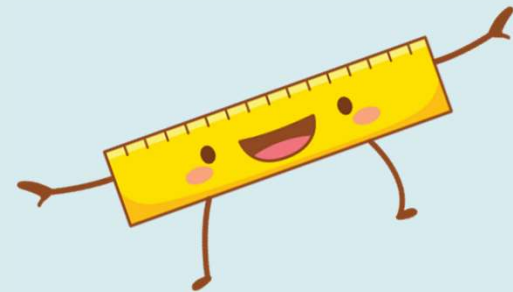
6<sup>th</sup> Grade:  
World History



7<sup>th</sup> Grade:  
U.S. History



8<sup>th</sup> Grade:  
Civics



# World History Curriculum



This course explores key developments in world history, tracing the journey from early human societies to the rise of influential ancient civilizations. Students will study the origins of human settlement and delve into the achievements and impacts of civilizations such as **Mesopotamia, Egypt, Israel, India, China, Greece, Rome, Christianity, and Mesoamerica**. Emphasis is placed on understanding the **geographic, religious, political, economic, and social factors** that shaped these cultures and their lasting influence on the modern world. Through this exploration, students will gain insights into how these foundational societies have contributed to our present-day global landscape.

- Ancient Civilizations**
- Mesopotamia
  - Egypt
  - Israel
  - India
  - China
  - Greece
  - Rome
  - Christianity
  - Mesoamerica

**G.R.A.P.E.S.**

# Textbook

**AT HOME:** Students are provided an Online World History Textbook, which includes additional online resources such as videos and audio of the text. The online textbook is located within your student's World History Schoology class.

**AT SCHOOL:** A hard-covered class set will be provided only within the classroom setting



Online Textbook - World History

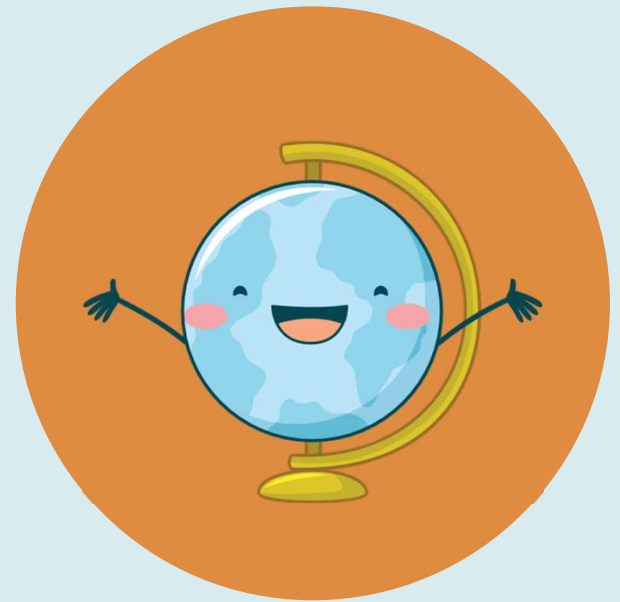


# District Testing

**There are no district final exams or midterms for World History.**

## **Common Summative Assessment (CSAs)**

- For all middle school social studies courses
- For one unit per quarter
- Will serve as the summative for that unit
- All teachers through the district must administer



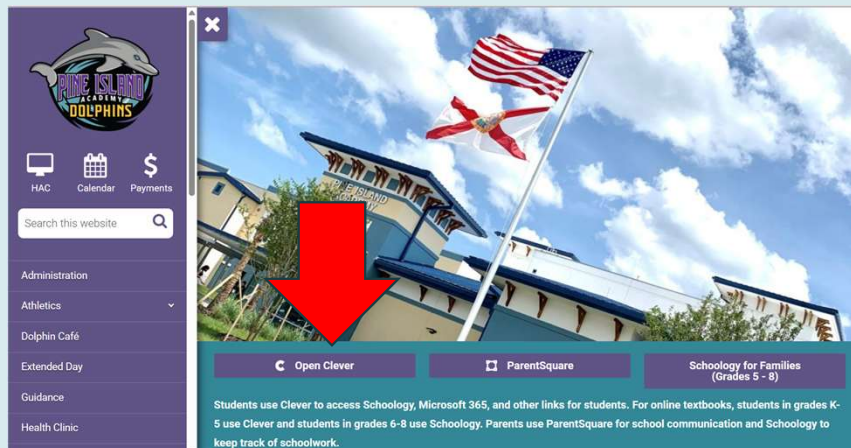
# Schoology



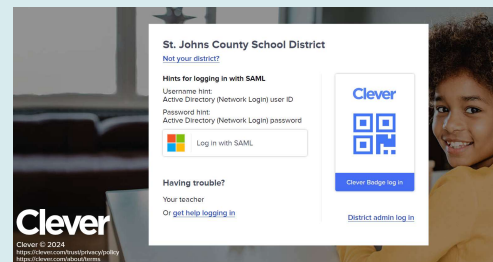
Our classes will use **Schoology** as a main source of communication. Each week we will post the assignments that we will be completing. Teachers will also post any upcoming projects, major due dates and attach extra copies of worksheets and/or study guides for the students.

**Students should be checking it DAILY**

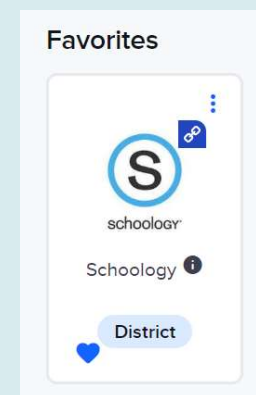
**Step 1:** Go to the Pine Island Academy Website and Click on “Open Clever”



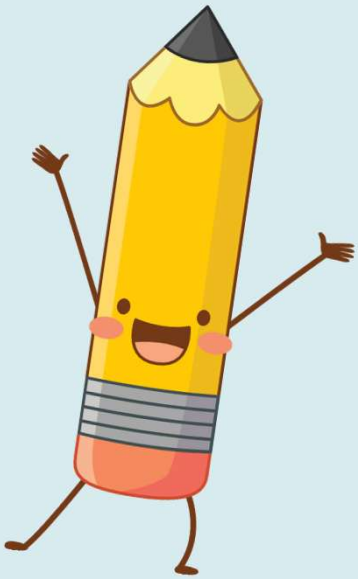
**Step 2:** Students will use their S# and Password to Log into Clever



**Step 3:** Click on the Schoology Icon to logged in (S# and Password may be required again)



# School Grading Policies



Students are assigned percentages for all class work, homework, quizzes, tests, projects, etc.

Students are responsible for keeping up with their grades in the class via HAC. However, we will update students in person as often as possible throughout the school year.

The school/district has adopted the following division for how the overall grade will be determined.

70% - Summative/Test Scores

30% - Formative/Class Work

## Grading Scale

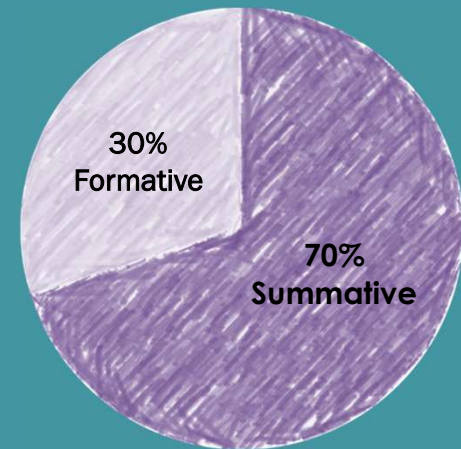
A = 90-100%

B = 80-89%

C = 70-79%

D = 60-69%

F = 59-0 <- Try Again!





## Retesting Policy

- Any student that scores an **85% B or below** will be offered the opportunity to retest once. The new grade will replace the old grade with **maximum grade on a retest will be 85% B.**
- Students have **1** opportunity to re-test per assessment and this must be completed within **10 school days** of the original assessment.
- Students **MUST** complete the reteaching assignment provided by the teacher prior to taking the re-test.

# Questions?

Please reach out if you have any questions or concerns

- Teresa McCormick: [Teresa.Mccormick@stjohns.k12.fl.us](mailto:Teresa.Mccormick@stjohns.k12.fl.us)

